



X-Shrink

the ONLY Microsoft® Excel® compressor that makes sense

X-Shrink PRO Manual

Introduction

X-Shrink reduces your Microsoft Excel files up to **95%**. The average compression rate is 50%.

It's very easy to use and you will have awesome results. Just drag your Excel file into X-Shrink and click on "shrink". That's all!

You don't need to **ZIP and UNZIP** the file again; it will **keep the XLS format**. When you have Excel sheets that are connected to other Excel files, you also have the possibility to add these files into X-Shrink as well. You also can add every file type you want. It will be automatically compressed, incorporated into the Excel sheet.

Important: Please make sure that you never open a compressed XLS File in the folder of the original file, because it will be rewritten after you click on yes in the popup.

System Requirements

X-Shrink can compress Excel files, created by using Microsoft **Excel 2000, XP and 2003**.

For using PowerShrink you must **have .NET Framework 2.0** installed on your PC. You can download .NET Framework 2.0 from the Microsoft Website.

Please note: Excel files must be bigger than **1.5 MB** for best results!

Installation of X-Shrink

Please download X-Shrink from our webpage

www.X-Shrink.com/download/setup.msi

After you double-click on the **setup.msi**, the installation starts and it will automatically check if you have .NET Framework 2.0 installed. If you have not, it will start to download the installation file from the Microsoft Website for the .NET Framework 2.0. Make sure that you have activated an internet connection.





X-Shrink

the ONLY Microsoft® Excel® compressor that makes sense

Starting X-Shrink

After starting **X-Shrink** for the first time you will get the activation screen where you can enter you serial number. If you have not obtained your serial number, please click on **Test now!**



After you receive your serial number, please just copy&paste it into the activation window.



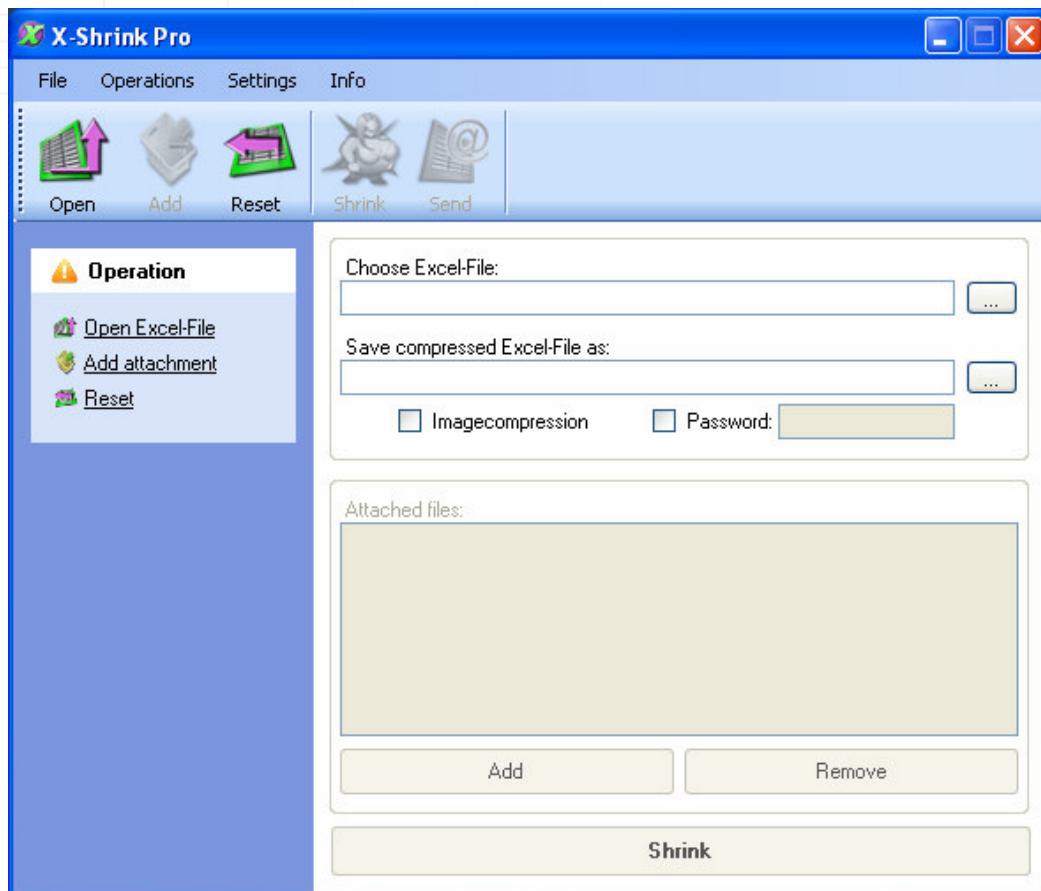


X-Shrink

the ONLY Microsoft® Excel® compressor that makes sense

Graphical user interface

The main **X-Shrink** window looks like this:



Please select the Excel file you want to shrink by clicking on "**Open**" or **simply drag&drop** your file into the first blank line "**Choose Excel-File**". You also can remove the Excel sheet from the list by clicking "Reset".

Some Excel sheets in corporate networks are linked to other data sources in the network. You **can add linked external data sources like txt files, other XLS sheets etc. into your XLS File**. It will be automatically shrunk and when you open the shrunk file, attachments will be decompressed into chosen folder.





X-Shrink

the ONLY Microsoft® Excel® compressor that makes sense

Export Pictures

If you just want to export the pictures from an Excel sheet, please click on "Operations > Export pictures. You will be asked for a destination folder.

Operations	Settings	Info
Compress		Strg+C
Send as eMail ...		Strg+M
Export Pictures ...		Strg+P

Image compression

Choose Excel-File:
D:_sand\22-08-06.xls

Save compressed Excel-File as:
D:_sand\22-08-06.comp.xls

Imagecompression Password: _____

X-Shrink

Please note:
If you enable Image compression, possible shortcuts which are incorporated into the image or the chart, will be DEACTIVATED!

Do you still want to enable Image compression?

Ja Nein

IMPORTANT: When you allow picture compression, all pictures and charts will loose their shortcuts. If the XLS files need to keep their shortcuts, please disable Image compression!!!!

Picture compression is needed if you want to disable the editing of embedded objects like charts or diagrams.

You also can set a password for the compressed file. Just mark "password" and enter one.





X-Shrink

the ONLY Microsoft® Excel® compressor that makes sense

Support

X-Shrink is very user friendly, but if you have problems using X-Shrink or other questions, please mail to: support@topbytelabs.com

For **Buying X-Shrink**, please visit our webpage www.X-Shrink.com and click on "Buy Now" or contact our sales department directly: sales@topbytelabs.com

Interested in becoming a **Reseller** of the first Excel compression solution in the world?

Please mail to sales@topbytelabs.com for more information about our powerful reselling program. Our solution will be your success!

Contact Details

TopByteLabs Ltd.

Kaiserstrasse 65
60329 Frankfurt
GERMANY

Websites : www.PicShrink , www.X-Shrink.com , www.PowerShrink.com





X-Shrink

the ONLY Microsoft® Excel® compressor that makes sense

X-Shrink with commandline

X-Shrink PRO can be used with commandline with nearly all features of the graphical user interface. Just open the commandline and browse to the folder where X-Shrink was installed.

```
C:\WINDOWS\system32\cmd.exe
C:\>cd Programme
C:\Programme>cd "TopByteLabs Ltd"
C:\Programme\TopByteLabs Ltd>cd "X-Shrink Pro"
C:\Programme\TopByteLabs Ltd\X-Shrink Pro>
```

Use the following options:

/register	register X-Shrink without GUI
/output	output folder where shrunked files will be saved
/add	add files which should be attached in your xls sheet
/adddir	add a complete folder which should be attached in your xls sheet
/rename	name shrunked file manually instead of *comp*
/password	set a password
/-p	X-Shrink won't compress pictures if the xls sheet is locked.
/ic	enable compression of pictures
/log	create a logfile. The logfile will be created in installed X-Shrink directory.

Important: please take care when you choose output folder or add a complete directory that you close with a "\\" (example: /output c:\excel2\)





X-Shrink

the ONLY Microsoft® Excel® compressor that makes sense

Examples:

xshrink.exe /register XXXXX-XXXXX-XXXXX-XXXXX-XXXXX /log

xshrink.exe file1 (f.e xshrink.exe c:\excel\test.xls\)
/output Path\Folder\ (f.e /output c:\excel\shrunked\)
/add File1 File2 ... (f.e /add c:\data\project.jpg\)
/rename Name (f.e /rename shrunked)
/password Password (f.e /password test123
/-p
/ic
/log (logfile will be created in folder where X-Shrink was installed)

xshrink.exe file1
/output Path\Folder\
/add Path\Folder\ (f.e /add c:\data\xls\)
/rename Name
/password Password
/-p
/log

xshrink.exe file1 file2 file3 ...
/output folder
/rename name
/password password
/-p
/ic
/log

xshrink.exe Path\Folder (f.e xshrink.exe c:\excel\)
/output folder
/rename name
/password password
/-p

X-Shrink was successfully tested with hundreds of Excel sheets in batch mode. Please note that protected Excel sheets cannot be shrunked and if you enable picture compression your charts and diagrams loose their shortcuts.



TopByteLabs Ltd.

Kaiserstraße 65 - 60329 Frankfurt am Main - Germany

phone: +49 (0) 69 / 26 95 27 80 fax: +49 (0) 69 / 24 29 56 30

www.TopByteLabs.com - www.X-Shrink.com

